



SHEERWEAVE[®]
BY PHIFER

STYLE
2000 / 2100



WEAVING
EXCELLENCE
WITH
INNOVATION

Code	Color	SOLAR OPTICAL PROPERTIES				SHGC/G VALUE g-tot (glass & blind)	
		TS	RS	AS	TV	SINGLE 1/4 CL	INSULATING 1 HA
STYLE 2000 - 5%							
P02	White	20	67	13	16	0.30	0.28
P04	White/Bone	18	61	21	13	0.32	0.30
P05	White/Platinum	13	49	38	11	0.38	0.32
Q05	Bone	18	55	27	12	0.36	0.31
Q06	Bone/Platinum	12	43	45	10	0.41	0.34
Q10	Bronze	5	7	88	6	0.59	0.44
V04	Platinum	10	35	55	9	0.45	0.37
V21	Charcoal	6	4	90	6	0.61	0.44
V22	Charcoal/Gray	7	9	84	7	0.58	0.44
V24	Charcoal/Chestnut	6	7	87	6	0.59	0.44
STYLE 2100 - 10%							
P02	White	22	60	18	16	0.34	0.30
P04	White/Bone	19	54	27	14	0.37	0.31
P05	White/Platinum	16	47	37	12	0.40	0.33
Q05	Bone	19	44	37	15	0.42	0.35
Q06	Bone/Platinum	16	38	46	14	0.44	0.36
Q10	Bronze	8	5	87	9	0.61	0.44
V04	Platinum	10	31	59	9	0.47	0.37
V21	Charcoal	9	4	87	10	0.62	0.44
V22	Charcoal/Gray	11	8	81	12	0.60	0.44
V24	Charcoal/Chestnut	11	6	83	12	0.61	0.44



PROTECTION THAT LIVES ON
MICROBAN®

Microban® antimicrobial protection inhibits the growth of stain-causing bacteria, mold and mildew on the shade.



PRODUCT CERTIFIED FOR
LOW CHEMICAL EMISSIONS
UL.COM/GG
UL 2818



MIF Seal of Approval



TS = Solar Transmittance
RS = Solar Reflectance
AS = Solar Absorptance
TV = Visual Transmittance

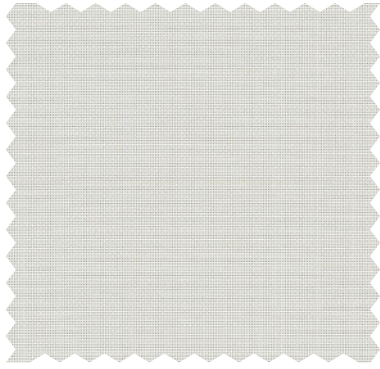
SHGC = Solar Heat Gain Coefficient

1/4 CL = 1/4" Clear Glass
1 HA = 1" Heat Absorbing Glass

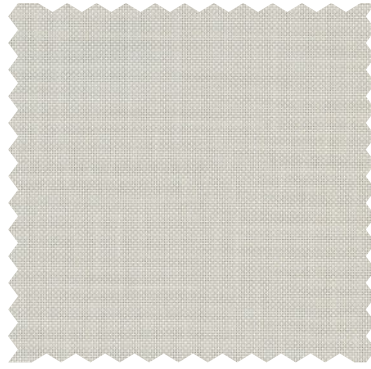
Fabrics Installed Internally
Zero-Degree Profile Angle

For additional performance values,
test references and technical
definitions visit us at phifer.com.

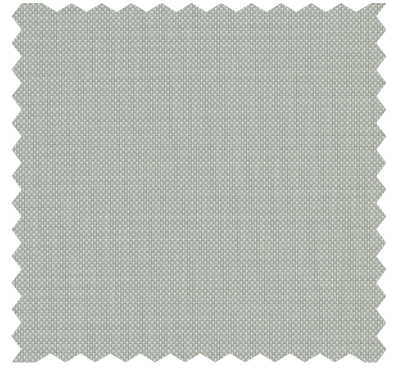
P02 **White**



P04 **White/Bone**



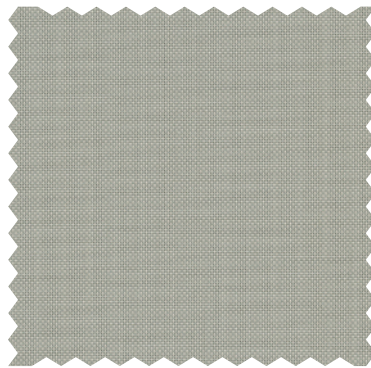
P05 **White/Platinum**



Q05 **Bone**



Q06 **Bone/Platinum**



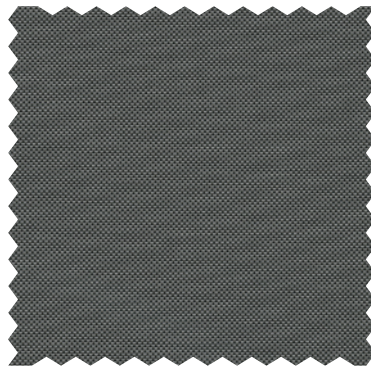
V04 **Platinum**



Q10 **Bronze**



V22 **Charcoal/Gray**



V24 **Charcoal/Chestnut**



V21 **Charcoal**



STYLE 2000/2100 SPECIFICATIONS

The original SheerWeave fabrics, Styles 2000 and 2100 are vinyl coated fiberglass basketweaves designed expressly for those applications that require a more opaque and non-directional fabric. Styles 2000 and 2100 can also be used in exterior shading systems.

FIRE CLASSIFICATION	NFPA 101 (Class A Rating) California U.S. Title 19 (small scale) BS 5867 Part 2 Type B Performance CAN/ULC-S 109 (large and small scale)	CAN/CGSB2-4.162-M80 NFPA 701 TM#1 (small scale) NFPA 701 TM#2 (large scale) IBC Section 803.1.1 (Class A Rating)
<i>Fire classifications are subject to change. Please go to phifer.com for the most current information.</i>		
BACTERIA AND FUNGAL RESISTANCE	ASTM E 2180 ASTM G21 ASTM G22 AATCC30 Part 3 ASTM D 3273 GREENGUARD Mold and Bacteria Standard ASTM 6329 includes Microban antimicrobial additives	
ENVIRONMENTAL CERTIFICATION	GREENGUARD GREENGUARD Gold Certified to these standards for low chemical emissions into indoor air during product usage	
SAFE USE	RoHS/Directive 2002/95/EC ANSI/WCMA A 100.1-2007 for lead content	REACH (EC 1907/2006) compliant US Consumer Product Safety Commission Section 101
WARRANTY	10-year interior 5-year exterior	
UV PROTECTION	Seal of Approval by the Melanoma International Foundation (MIF) for effectiveness in preventing sun damage to the skin or eyes	
TRACKLESS	TrackLess Technology minimizes the fiberglass yarns' inherent tendencies to track when being rolled up in a shade. With TrackLess Technology these same fabrics now track less, roll up straighter and reduce shade fabrication time.	

STYLE	2000	2100
WIDTHS	63", 98" and 126" 160 cm, 248.9 cm and 320 cm	63", 98" and 126" 160 cm, 248.9 cm and 320 cm
ROLL LENGTH	30 Linear Yards 27.4 Linear Meters	30 Linear Yards 27.4 Linear Meters
COMPOSITION	37% Fiberglass 63% Vinyl on Fiberglass	37% Fiberglass 63% Vinyl on Fiberglass
MESH WEIGHT	14.4 oz/yd ² 488 g/m ²	12.9 oz/yd ² 437 g/m ²
FABRIC THICKNESS	0.021 in 0.53 mm	0.021 in 0.53 mm
OPENNESS FACTOR	Approximately 5%	Approximately 10%
UV BLOCKAGE	Approximately 95%	Approximately 90%
ACOUSTICAL VALUE	NRC .10 / SAA .11	NRC .05 / SAA .06

PHIFER
INCORPORATED

P. O. Box 1700 • Tuscaloosa, Alabama 35403-1700 USA
Phone: 205.345.2120 • FAX: 205.391.0799
Toll Free USA/Canada: 1.800.221.5497
phifer.com • ISO Registered



© SheerWeave is a registered trademark of PHIFER INCORPORATED.
© MICROBAN is a registered trademark of Microban Products Company.
™ UL, the UL logos and the UL mark are trademarks of UL LLC.
Photo courtesy of Draper INC., Spiceland, Indiana, USA.
© PHIFER INCORPORATED V20 080520 3033831