



STYLE
4600 / 4500

WEAVING
EXCELLENCE
WITH
INNOVATION



| Code | Color | SOLAR OPTICAL PROPERTIES | | | | SHGC/G VALUE | |
|------------------------|-------------|--------------------------|----|----|----|-------------------------|---------------------------|
| | | TS | RS | AS | TV | <i>SINGLE</i> 1/4 CL | <i>INSULATING</i> 1 HA |
| STYLE 4600 - 3% | | | | | | | |
| P06 | Chalk | 10 | 74 | 16 | 9 | 0.23 | 0.19 |
| P10 | Granite | 5 | 43 | 52 | 7 | 0.40 | 0.27 |
| Q59 | Ecru | 7 | 58 | 35 | 8 | 0.32 | 0.23 |
| Q60 | Golden Sand | 6 | 37 | 57 | 7 | 0.44 | 0.29 |
| U32 | Linen | 8 | 64 | 28 | 8 | 0.29 | 0.22 |
| V07 | Pewter | 5 | 31 | 64 | 7 | 0.46 | 0.30 |
| V10 | Ebony | 3 | 3 | 94 | 5 | 0.61 | 0.37 |
| V44 | Sandstone | 5 | 39 | 56 | 6 | 0.42 | 0.29 |
| V95 | Cappuccino | 4 | 20 | 76 | 6 | 0.52 | 0.33 |
| V96 | Dark Bronze | 4 | 5 | 91 | 7 | 0.60 | 0.37 |
| STYLE 4500 - 5% | | | | | | | |
| P06 | Chalk | 12 | 74 | 14 | 11 | 0.23 | 0.19 |
| P10 | Granite | 6 | 47 | 47 | 8 | 0.37 | 0.26 |
| Q59 | Ecru | 9 | 56 | 35 | 9 | 0.33 | 0.24 |
| Q60 | Golden Sand | 7 | 37 | 56 | 8 | 0.44 | 0.29 |
| U32 | Linen | 11 | 63 | 26 | 12 | 0.30 | 0.23 |
| V07 | Pewter | 6 | 30 | 64 | 9 | 0.47 | 0.30 |
| V10 | Ebony | 5 | 3 | 92 | 7 | 0.61 | 0.37 |
| V44 | Sandstone | 8 | 40 | 52 | 9 | 0.42 | 0.29 |
| V95 | Cappuccino | 6 | 18 | 76 | 9 | 0.53 | 0.34 |
| V96 | Dark Bronze | 7 | 5 | 88 | 10 | 0.61 | 0.37 |



PROTECTION THAT LIVES ON
MICROBAN[®]
 Microban[®] antimicrobial protection inhibits the growth of stain-causing bacteria, mold and mildew on the shade.



PRODUCT CERTIFIED FOR
 LOW CHEMICAL EMISSIONS
 UL.COM/GG
 UL 2818



MIF Seal of Approval



TS = Solar Transmittance
 RS = Solar Reflectance
 AS = Solar Absorptance
 TV = Visual Transmittance

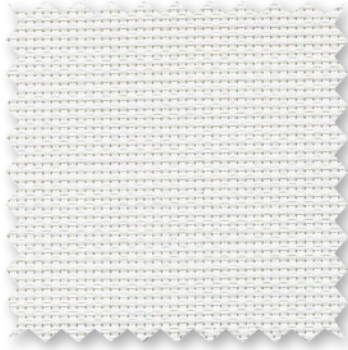
SHGC = Solar Heat Gain Coefficient

1/4 CL = 1/4" Clear Glass
 1 HA = 1" Heat Absorbing Glass

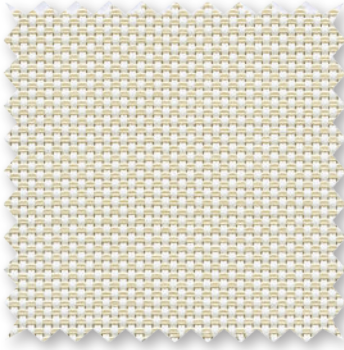
Fabrics Installed Internally
 Zero-Degree Profile Angle

For additional performance values, test references and technical definitions visit us at www.phifer.com.

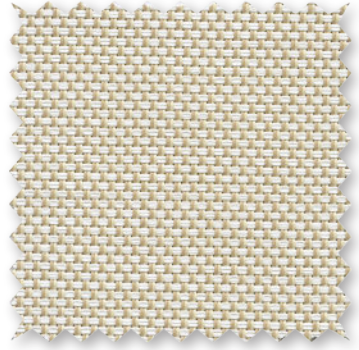
P06 Chalk



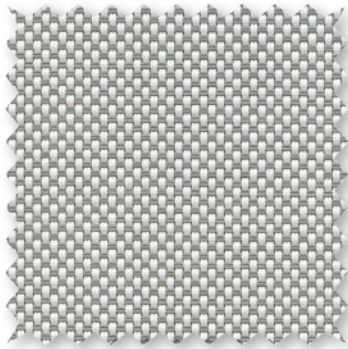
U32 Linen



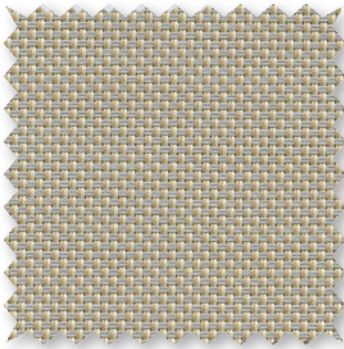
Q59 Ecrú



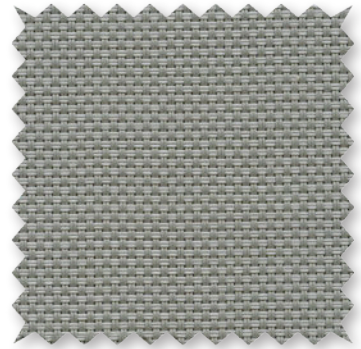
P10 Granite



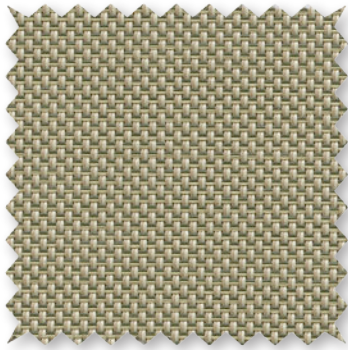
V44 Sandstone



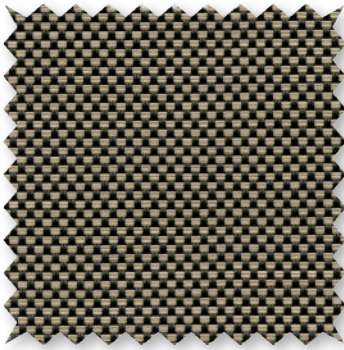
V07 Pewter



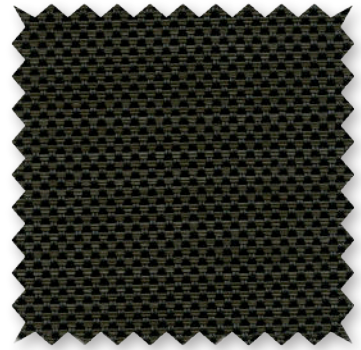
Q60 Golden Sand



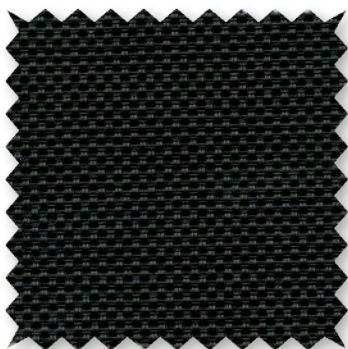
V95 Cappuccino



V96 Dark Bronze



V10 Ebony



*Colors may vary based on individual computer settings and should only be used for general reference.

STYLE 4600 / 4500 SPECIFICATIONS

Using advances in polyester yarn development, Styles 4600 and 4500 are thinner, lighter weight vinyl coated polyester fabrics offered in 10 decorator colors. Woven in a 2x2 basketweave, these fabrics are ideal for applications where a more opaque and non-directional fabric is needed. Style 4600/4500 can also be used in exterior shading systems.

| | | |
|----------------------------|--|---------------------------------------|
| FIRE CLASSIFICATION | California U.S. Title 19 (small scale) | BS 5867 Part 2 Type B Performance |
| | NFPA 701 TM#1 (small scale) | CAN/ULC-S 109 (large and small scale) |
| | NFPA 701 TM#2 (large scale) | IBC Section 803.1.1 (Class A Rating) |
| | NFPA 101 (Class A Rating) | |

Fire classifications are subject to change. Please go to phifer.com for the most current information.

| | | | | | |
|---------------------------------------|---|----------|----------|----------------|-------------|
| BACTERIA AND FUNGAL RESISTANCE | ASTM E 2180 | ASTM G21 | ASTM G22 | AATCC30 Part 3 | ASTM D 3273 |
| | GREENGUARD Mold and Bacteria Standard ASTM 6329 includes Microban antimicrobial additives | | | | |

| | | |
|------------------------------------|--|-----------------|
| ENVIRONMENTAL CERTIFICATION | GREENGUARD | GREENGUARD Gold |
| | Certified to these standards for low chemical emissions into indoor air during product usage | |

| | | |
|-----------------|---|--------------------------------|
| SAFE USE | RoHS/Directive 2002/95/EC | REACH (EC 1907/2006) compliant |
| | ANSI/WCMA A 100.1-2007 for lead content | |
| | US Consumer Product Safety Commission Section 101 | |

| | | |
|-----------------|------------------|-----------------|
| WARRANTY | 10-year interior | 5-year exterior |
|-----------------|------------------|-----------------|

| | |
|-------------------------------|--|
| ACOUSTICAL PERFORMANCE | NRC (Noise Reduction Coefficient) and SAA (Sound Absorption Average) tested in accordance with ASTM C423-09a |
|-------------------------------|--|

| | |
|----------------------|--|
| UV PROTECTION | Seal of Approval by the Melanoma International Foundation (MIF) for effectiveness in preventing sun damage to the skin or eyes |
|----------------------|--|

| STYLE | 4600 | 4500 |
|-------------------------|--|--|
| WIDTHS | 63", 98" and 126" 160 cm, 248.9 cm and 320 cm | 63", 98" and 126" 160 cm, 248.9 cm and 320 cm |
| ROLL LENGTH | 30 Linear Yards 27.4 Linear Meters | 30 Linear Yards 27.4 Linear Meters |
| COMPOSITION | 22% Polyester 78% Vinyl on Polyester | 17% Polyester 83% Vinyl on Polyester |
| MESH WEIGHT | 17.4 oz/yd ² 589.97 g/m ² | 14.4 oz/yd ² 488.25 g/m ² |
| FABRIC THICKNESS | 0.030 in 0.76 mm | 0.024 in 0.61 mm |
| OPENNESS FACTOR | Approximately 3% | Approximately 5% |
| UV BLOCKAGE | Approximately 97% | Approximately 95% |
| ACOUSTICAL VALUE | NRC .20 / SAA .23 | NRC .15 / SAA .17 |

PHIFER
INCORPORATED

P. O. Box 1700 • Tuscaloosa, Alabama 35403-1700 USA
Phone: 205.345.2120 • FAX: 205.391.0799
Toll Free USA/Canada: 1.800.221.5497
phifer.com • ISO Registered



© SheerWeave is a registered trademark of PHIFER INCORPORATED.
© MICROBAN is a registered trademark of Microban Products Company.
™ UL, the UL logos and the UL mark are trademarks of UL LLC.
Photo courtesy of Rielamericano, Buenos Aires, Argentina.
© PHIFER INCORPORATED V19 070919 3033835