

KOOLBLACK[®] TECHNOLOGY

KOOLBLACK[®] Technology eliminates the tradeoffs between aesthetics and performance by incorporating near-infrared, heat reflective properties into dark color screen fabrics. This feature, coupled with the other benefits of dark colored fabrics, provides excellent contrast for a clear view through, uniformed exterior building design, maximized energy savings and optimized occupant comfort.

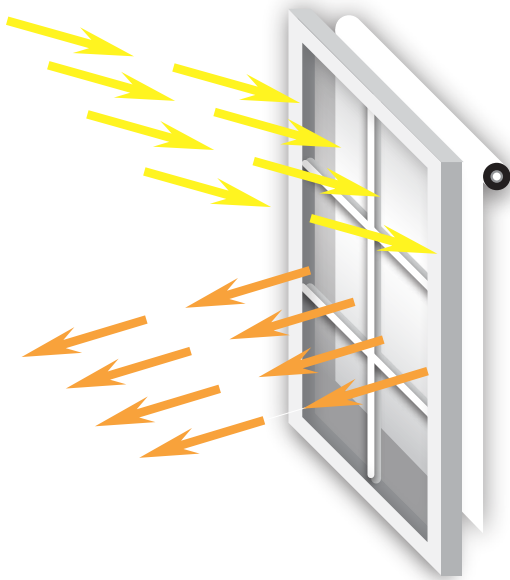
T Screen with KOOLBLACK[®] Technology:

T Screen with KOOLBLACK[®] Technology is the best performing fabric in its category for surface heat reflectance. With this proprietary shade product, buildings can be utilized more efficiently through maximizing the area of working space and decreasing energy load.

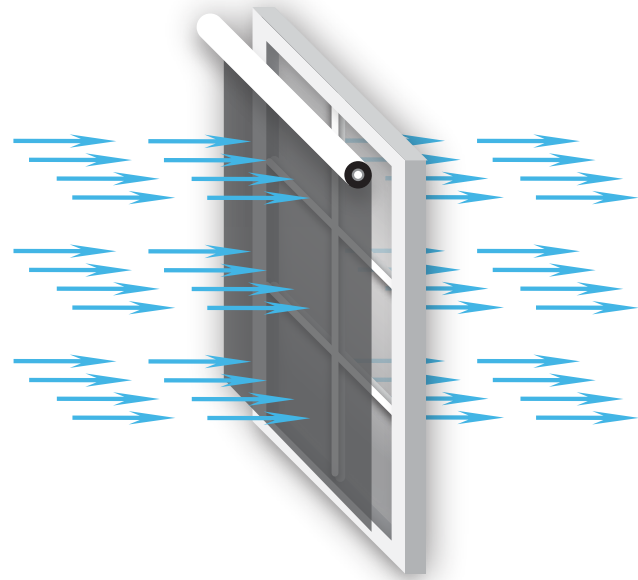
- Woven with KOOLBLACK[®] Technology infused dark yarns and reflective white yarns for enhanced heat reflection
- Reduces overall visible light transmittance (Tv) for superior views, glare control and the same daylighting benefits of conventional dark shade fabrics.
- KOOLBLACK[®] dark yarns provide unmatched surface heat reflectance for less interior radiated heat and more comfortable working spaces around the shade installation
- High infrared reflectance, RS (IR), for reduced temperatures and cooling costs

WHITE SIDE TO EXTERIOR

DARK SIDE TO INTERIOR



REFLECTS RADIATION AND CONTROLS HEAT



CLEAR, CRISP OUTWARD VISIBILITY



More information on Mermet's full line of KOOLBLACK[®] Technology fabrics, E Screen with KOOLBLACK[®] Technology and T Screen with KOOLBLACK[®] Technology, can be found at www.mermetusa.com.



High Performance | 1% 3% 5% openness

T Screen WITH KOOLBLACK[®] TECHNOLOGY

Specifications

Item Number
Product Category
Fabric Style
Openness Factor
Composition
UV Blockage
Standard Packaging
Width
Weight
Thickness

1% 009701 | 3% 009703 | 5% 009705
High Performance
Satin
1%, 3% & 5%
36% Fiberglass / 64% Vinyl
Approximately 95% - 99%
Rolls of 30 ly (27 lm)
98" (250 cm), 122" (310 cm)
1% 13.54 oz/yd² (459g/m²) ±5% | 3% 13.27 oz/yd² (450g/m²) ±5% | 5% 12.48 oz/yd² (423g/m²) ±5%
1% 0.024 in (0.61 mm) ±5% | 3% 0.029 in (0.74 mm) ±5% | 5% 0.027 in (0.69 mm) ±5%

Classifications

Fire Classifications

NFPA 701-10 TM#1, California U.S. Title 19
CAN/ULC-S109-03 Small Flame Test
ASTM E2180, ASTM G21
RoHS - Lead Free, GREENGUARD Gold

Bacterial & Fungal Resistance
Environment
Thickness

1% NRC: 0.10, SAA: 0.11 | 3% NRC: 0.05, SAA: 0.08 | 5% NRC: 0.10, SAA: 0.07

Fabrication

Cutting: Cold, Ultrasonic or Crush | Welding: Radio Frequency, High Frequency, Impulse, Hot Air or Wedge

We recommend testing all cutting and welding methods prior to use to confirm they meet your individual fabric specifications.

T Screen WITH KOOLBLACK[®] TECHNOLOGY

ITEM	COLOR	SIDE*	FABRIC																				
			Rs IR (%)			Rs (%)			As (%)			Ts (%)			Rv (%)			Tv (%)			FABRIC + GLASS commercial SHGC % Improvement		
1	3	5	1	3	5	1	3	5	1	3	5	1	3	5	1	3	5	1	3	5	1	3	5
002131	White/Grey	Roomside	70	69	67	52	53	49	36	34	35	12	13	16	38	39	35	6	7	10	34	34	32
		Streetside	72	70	67	69	68	63	18	18	20	13	14	17	69	68	60	7	9	11	55	53	47
002032	White/Cocoa	Roomside	69	65	63	46	44	41	41	40	41	13	16	18	26	27	22	6	9	10	26	24	21
		Streetside	71	67	64	68	62	57	19	23	26	13	15	17	67	60	53	7	8	10	53	45	39
002035	White/Charcoal	Roomside	67	65	62	43	43	39	46	41	43	11	16	18	24	25	19	4	9	10	26	24	18
		Streetside	69	66	64	65	62	57	24	23	26	11	15	17	63	60	52	4	8	9	50	45	39
00K131	White/Charcoal-Grey	Roomside	70	67	65	48	48	45	41	38	38	11	14	17	30	32	27	4	7	10	29	32	26
		Streetside	72	69	66	69	66	61	20	20	22	11	14	17	68	66	58	4	7	10	55	53	45
00K302	White/Charcoal-Cocoa	Roomside	67	65	62	44	44	40	44	40	43	12	16	17	25	26	20	6	9	10	26	24	21
		Streetside	69	67	64	65	62	57	22	23	26	13	15	17	64	60	53	7	8	9	50	45	39

*Roomside: identified by the color side; Streetside: identified by the white side.

Warranty

5 Year Exterior & 10 Year Interior

Care & Cleaning

Remove dust with a vacuum cleaner or compressed air. Do not scrub. Do not use solvents or any abrasive substance which might damage the coating of the fabric. Clean with a sponge or soft brush dipped in soapy water using a mild detergent. Rinse with clean water. Leave the blind down until completely dry. You can also very gently rub the fabric with a clean white pencil eraser to remove small stains.

The fabric performance tests were conducted in accordance with ASTM E891 & ASTM E903-96: Total Solar Transmittance (Ts), Total Solar Reflectance (Rt), Solar Reflectance in Infrared (Rs IR), Total Solar Absorptance (As), Visible Reflectance (Rv), and Visible Transmittance (Tv). Glass performance tests for Solar Heat Gain Coefficient (SHGC) were conducted using the Lawrence Berkeley National Laboratory Window 7.3 NFRC certified software. SHGC % improvement for commercial applications is based on a standard commercial glass makeup of Double Glazing 6 mm / 1/8" air / 6 mm with low E on surface #2. Results for SHGC were obtained using the center of glass. Acoustical performance was tested in accordance with ASTM C423-09a: NRC is Noise Reduction Coefficient, SAA is Sound Absorption Average. For residential SHGC data and the most up-to-date test results, performance specifications, and larger samples, contact the Mermet Technical Department at: www.mermetusa.com.



Sun Control Textiles[™]

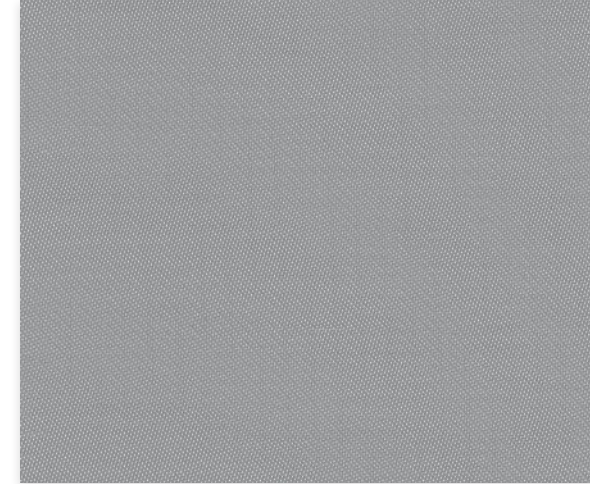
Mermet Corporation
5970 N. Main Street ■ Cowpens, SC 29330
Ph 1.866.902.9647 ■ info@mermetusa.com

mermetusa.com

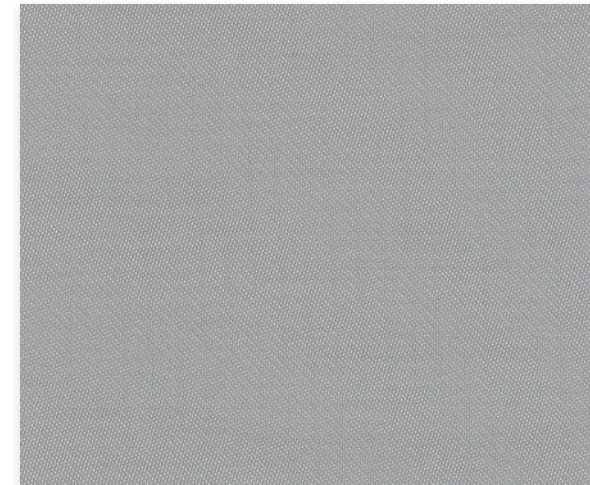
© 2017, Mermet Corporation, All right reserved, US and Foreign patents pending.

T Screen | WITH **KOOLBLACK** TECHNOLOGY

High Performance | 1% 3% 5% openness



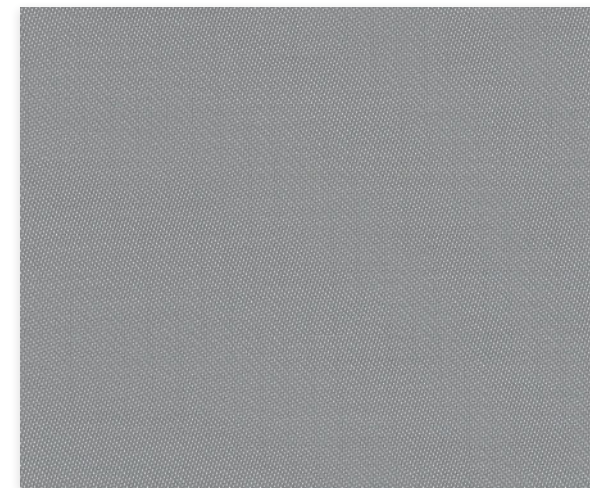
1% 002131 | White/Grey



002032
White/
Cocoa

3% 002131 | White/Grey

002035
White/
Charcoal



00K131
White/
Charcoal-
Grey

00K302
White/
Charcoal-
Cocoa

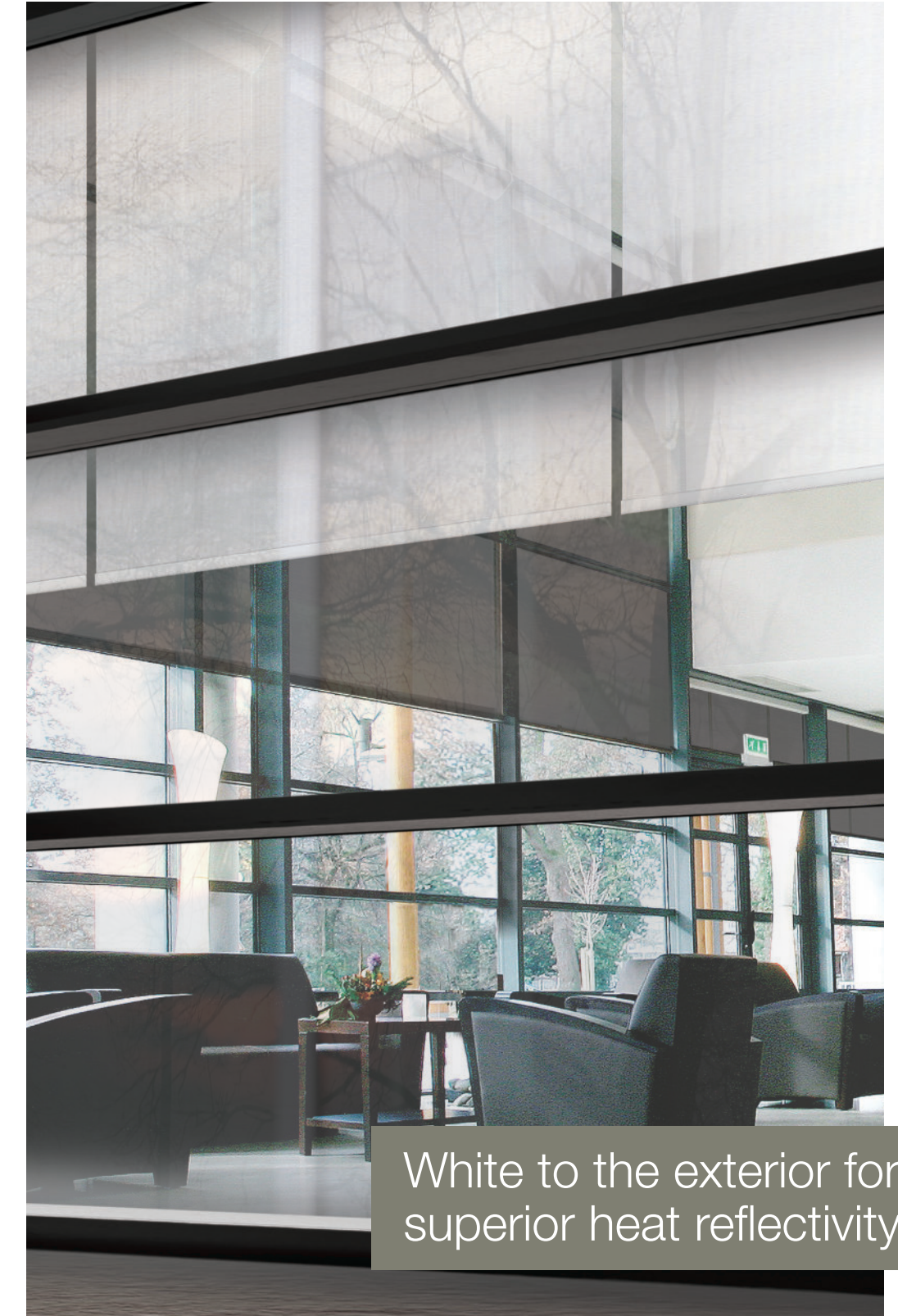
5% 002131 | White/Grey

Architects and designers no longer have to sacrifice occupant comfort, the aesthetic of the façade or building envelope performance when specifying shade solutions.



Dark to the inside for clear view and superior glare control.

FABRIC | T SCREEN WITH KOOLBLACK® TECHNOLOGY COLOR | WHITE CHARCOAL VIEW | INSIDE



White to the exterior for superior heat reflectivity.

FABRIC | T SCREEN WITH KOOLBLACK® TECHNOLOGY COLOR | WHITE CHARCOAL VIEW | OUTSIDE

Fabrics sampled on the left are 5% openness. All colors are available in 1%, 3% and 5% openness factors.

