



STYLE
7000
BLACKOUT FABRIC

WEAVING
EXCELLENCE
WITH
INNOVATION



Code	Color	SOLAR OPTICAL PROPERTIES				SHGC/G VALUE g-tot (glass & blind)	
		TS	RS	AS	TV	SINGLE 1/4 CL	INSULATING 1 HA
STYLE 7000 - BLACKOUT							
P63	Birch	0	74	26	0	0.21	0.18
Q00	Merino	0	72	28	0	0.23	0.19
Q57	Wheat	0	75	25	0	0.21	0.18
U67	Canvas	0	73	27	0	0.22	0.19
P62	White	0	74	26	0	0.21	0.18
P64	Sand	0	73	27	0	0.22	0.19
Q58	Mushroom	0	70	30	0	0.23	0.20
U69	Cocoa	0	72	28	0	0.23	0.19
V41	Canyon	0	74	26	0	0.21	0.19
V39	Graphite	0	71	29	0	0.23	0.19
V70	Porpoise	0	73	27	0	0.22	0.19
V40	Onyx	0	72	28	0	0.23	0.19



PRODUCT CERTIFIED FOR
LOW CHEMICAL EMISSIONS
UL.COM/GG
UL 2818



TS = Solar Transmittance
RS = Solar Reflectance
AS = Solar Absorptance
TV = Visual Transmittance

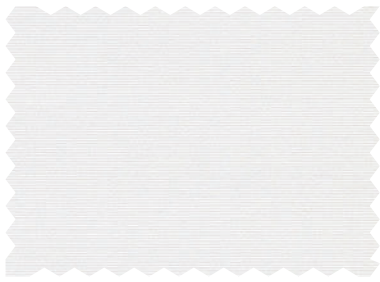
SHGC = Solar Heat Gain Coefficient

1/4 CL = 1/4" Clear Glass
1 HA = 1" Heat Absorbing Glass

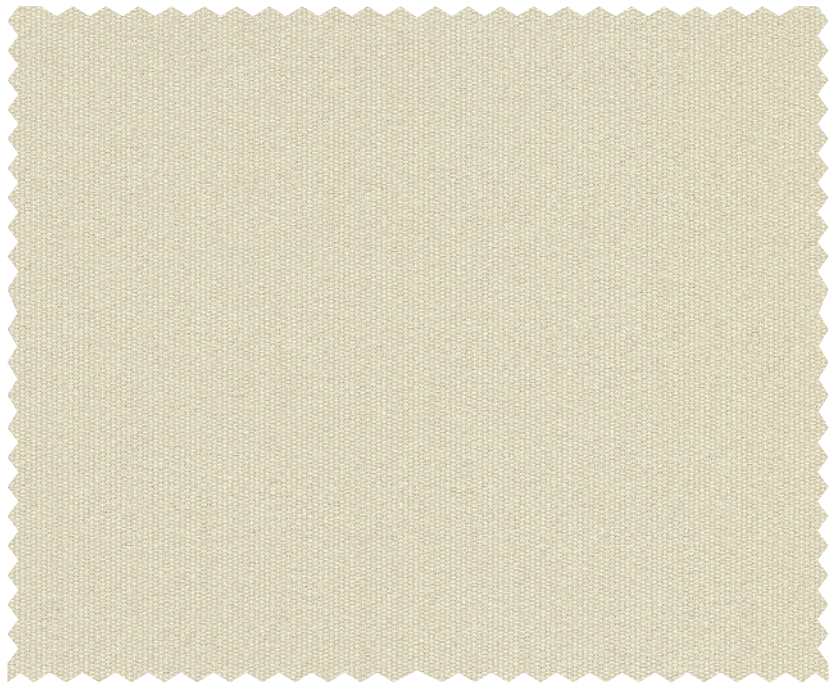
Fabrics Installed Internally
Zero-Degree Profile Angle

For additional performance values,
test references and technical
definitions visit us at phifer.com.

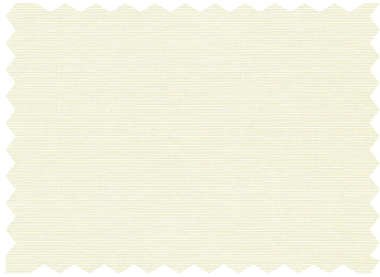
P62 **White**



P64 **Sand**



P63 **Birch**



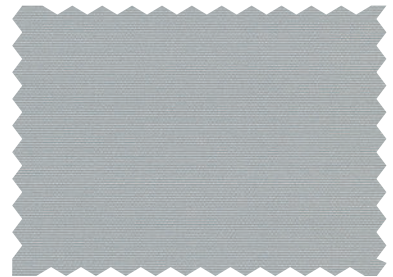
Q57 **Wheat**



Q00 **Merino**



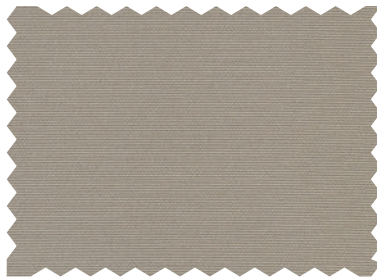
V41 **Canyon**



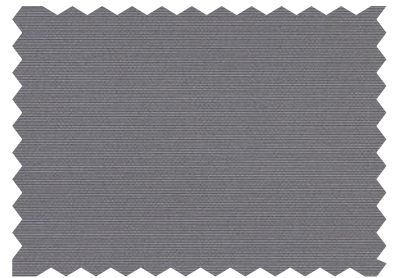
U67 **Canvas**



Q58 **Mushroom**



V70 **Porpoise**



V39 **Graphite**



U69 **Cocoa**



V40 **Onyx**



STYLE 7000 SPECIFICATIONS

Style 7000 is uniquely designed to provide total light blockage when complete room darkening is needed. With a broad range of decorator colors, the look and feel of rich cloth and a PVC-free composition, Style 7000 will enhance the beauty and function of both commercial and residential spaces. All Style 7000 colors have an off-white backing.

FIRE CLASSIFICATION	California U.S. Title 19 (small scale) BS 5867 Part 2 Type B Performance IBC Section 803.1.1 (Class A Rating) NFPA 101 (Class A Rating)	NFPA 701 TM#1 (small scale) CAN/ULC-S 109 (large and small scale) CAN/CGSB2-4.162-M80
----------------------------	--	---

Fire classifications are subject to change. Please go to phifer.com for the most current information.

BACTERIA AND FUNGAL RESISTANCE
ASTM G21-96

ENVIRONMENTAL CERTIFICATION
GREENGUARD GREENGUARD Gold
Certified to these standards for low chemical emissions into indoor air during product usage

SAFE USE
ANSI/WCMA A 100.1-2007 for lead content US Consumer Product Safety Commission Section 101
RoHS Compliant

WARRANTY
5-year interior

ACOUSTICAL PERFORMANCE
NRC (Noise Reduction Coefficient) and SAA (Sound Absorption Average) tested in accordance with
ASTM C423-09a

UV PROTECTION
SheerWeave sun control fabrics are an effective way to reduce harmful UV rays. Phifer Incorporated is a proud member of the Skin Cancer Foundation's Corporate Council.

CLEANING INSTRUCTIONS
Fabric should be regularly dusted/vacuumed as appropriate. If commercial spot cleaners are used, they must first be tested and allowed to dry on an inconspicuous area to ensure compatibility.

Railroading this fabric is not recommended.

Colors may vary slightly from swatch samples. All variations are within industry standards.

STYLE 7000

WIDTHS	94" and 118" 238.8 cm and 300 cm
ROLL LENGTH	30 Linear Yards 27.4 Linear Meters
COMPOSITION	100% Polyester with Acrylic Flocked Backing
MESH WEIGHT	12.4 oz/yd ² 420.43 g/m ²
FABRIC THICKNESS	0.029 in 0.74 mm
OPENNESS FACTOR	Opaque
ACOUSTICAL VALUE	NRC .10 / SAA .08

PHIFER
INCORPORATED

P. O. Box 1700 • Tuscaloosa, Alabama 35403-1700 USA
Phone: 205.345.2120 • FAX: 205.391.0799
Toll Free USA/Canada: 1.800.221.5497
phifer.com • ISO Registered



© SheerWeave is a registered trademark of PHIFER INCORPORATED.
™ UL, the UL logos and the UL mark are trademarks of UL LLC.
Photo courtesy of Draper Inc., Spiceland, Indiana, USA.
© PHIFER INCORPORATED V23 072623 3033842